



**ANSIR
SYSTEMS**

Check-In Conveyor Tech Specs



ansir.com.au



+61 (03) 9768 3303



sales@ansir.com.au



6 Latchford Rd
Cranbourne West VIC 3977
Australia

Function

As the first point of interface between passenger and baggage handling system, the check in conveyor must be safe, reliable and functional. The check in conveyor is designed to weigh, label and dispatch baggage onto the collector / take away conveyor without the need of manual lifting by the check in operator. Ansir check in conveyors are designed with ergonomics and safety in mind. The tub load feature available in the two and three stage design) has proven to reduce the amount of lifting the check in agent has to perform and makes for simpler system operation. Whilst the basic design of the conveyor has been standardised, it is sufficiently flexible to accommodate variations in height and configuration.

Features

- High quality stainless steel finish.
- Roll in / roll out for ease of maintenance and cleaning.
- Fitted with quick disconnect plugs.
- Easy removal lift off side panels with no tools required.
- Passenger tamper proof weigh scale.
- Waterfall effect to assist transfer of baggage between conveyors.

Single Stage

- A single conveyor is used to weigh, label and dispatch the bag onto the collector / take- away conveyor.

Two Stage

- Baggage weigh and labelling operations are carried out on the scale conveyor and then transferred to the induct conveyor for accumulation / queuing and induction onto the collector / take-away conveyor.

Three Stage

- Separate conveyors are used for weighing, labelling and dispatch of the bags for maximum flexibility. Baggage weighing operations are carried out on the scale conveyor and then transferred to the labelling conveyor for attaching of the bag tag. The bag is then transferred onto the induct conveyor for accumulation / queuing and controlled induction onto the collector / take-away conveyor.

Technical Specifications

Drive Pulley

Crowned 113 mm diameter 0.37 kw internal motorised drum providing a conveyor speed of 0.5 m/sec.

End Roller

Crowned 90 mm diameter roller with 5.0 mm nominal thick wall steel tubing fitted with internal grease packed, sealed precision ball bearings. End rollers are mounted on a non- rotating 40 mm bright mild steel shaft.

Cladding

2.0 mm thick 304 grade stainless steel with No. 4 brushed finish.

- **Side Panel:** Folded construction with aesthetically pleasing radius front edge.
- **Bump Rail:** Mounted on a mild steel internal frame for ease of access and maintenance.

Bed Section

Folded 3 mm thick mild steel construction with black powder coated finish. Fabricated mild steel end brackets are used to mount both the end and drive rollers. Screw adjustment allows for take up and tracking of the conveyor belt.

Scale Base

Folded / fabricated 5 mm mild steel construction designed to comply with local weights and measures requirements.

Carriage

Folded 3 mm mild steel construction, black powder coated finish.

Plinth (base)

Folded 2 mm thick mild steel construction with black powder coated finish. Wheel tracks guide the conveyors as they roll in and out of the fixed plinth.

Belt

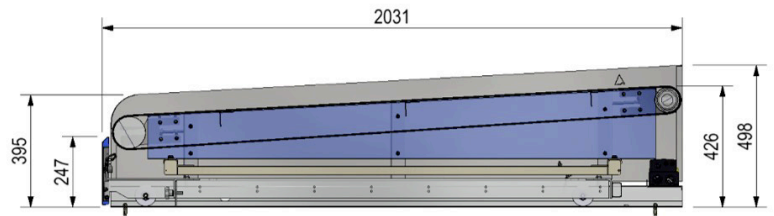
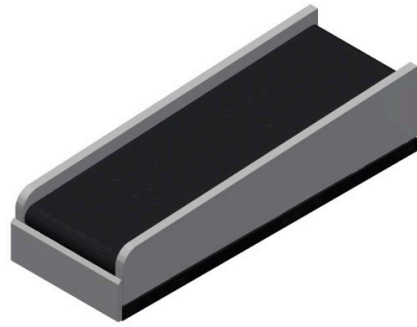
Flame retardant two ply PVC. Both vulcanised and mechanical lacing is offered depending on the customer's preference.

General Dimensions

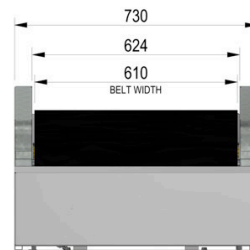
Note: overall widths of 700mm and 730mm are available to best suit site spatial requirements. 730mm wide check-ins are shown.

One Stage Check-In

Single stage Check-ins are provided in standard lengths of 2031mm and 2280mm to suit site spatial requirements.

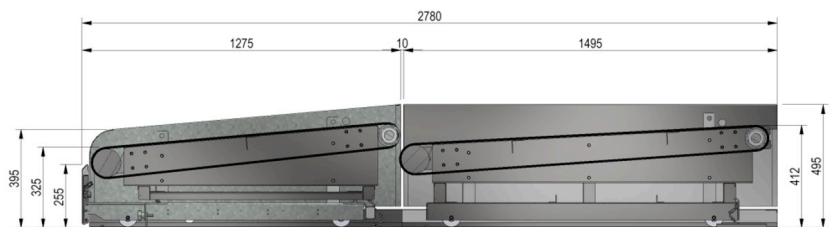
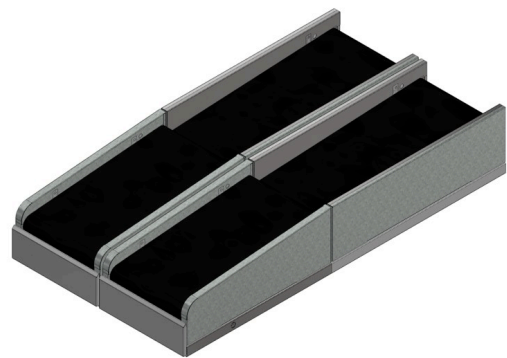


SECTION VIEW

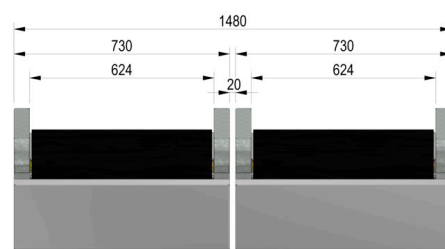


FRONT VIEW - SINGLE UNIT SHOWN

Two Stage Check-In



SECTION VIEW



FRONT VIEW - PAIR OF UNITS SHOWN