



**ANSIR  
SYSTEMS**

# Gravity Roller Conveyor Tech Specs



[ansir.com.au](http://ansir.com.au)



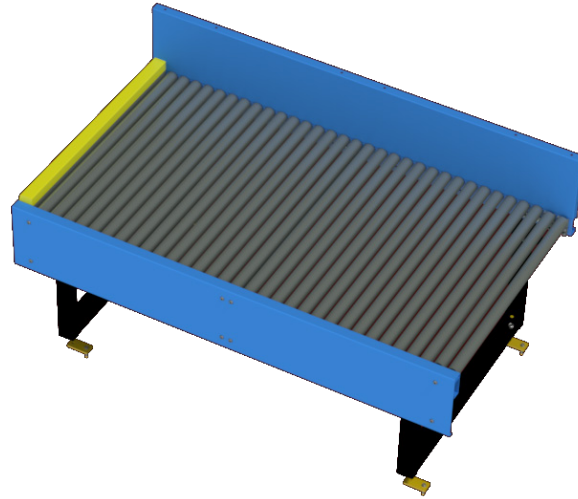
+61 (03) 9768 3303



[sales@ansir.com.au](mailto:sales@ansir.com.au)



6 Latchford Rd  
Cranbourne West VIC 3977  
Australia



## Function

Non powered accumulation of baggage / product. The conveyor can be placed flat for manual movement of the bag along its length or slightly declined to let gravity slowly transit the bag. Typical applications are:

- At the end of a make up lateral for accumulation.
- Manual processing areas to allow for the easy movement of baggage / product by the operator.

## Features

- Light weight and rigid conveyor frame. With safety edge fold. Cross bracing at approx. 900mm centers.
- Pop out rollers provided when butting up to a powered conveyor for safety.
- End stops provided as required to prevent baggage / product from falling off the conveyor.
- Powder coated conveyor frame and leg supports as standard (other finishes available on request).
- Individual sections up to 3000mm in length.
- Side guides provided on one side or both depending on the application.

## Key Parameters

### Between Frame Rails (BFR)

Typically 1060mm to match standard powered conveyor widths. (1450 BFR with split rollers can be provided for oversize product).

### Rollers

50mm dia galvabond finish with semi precision bearings. Spring loaded hex shaft for ease of installation and removal.

### Frame

2.5mm mild steel, formed C-shaped channel 40mm x 90mm x 40mm.

### Supports

Folded mild steel construction with adjustable threaded rod feed for easy levelling and adjustment.

### Finish

Powder coated frame and supports.